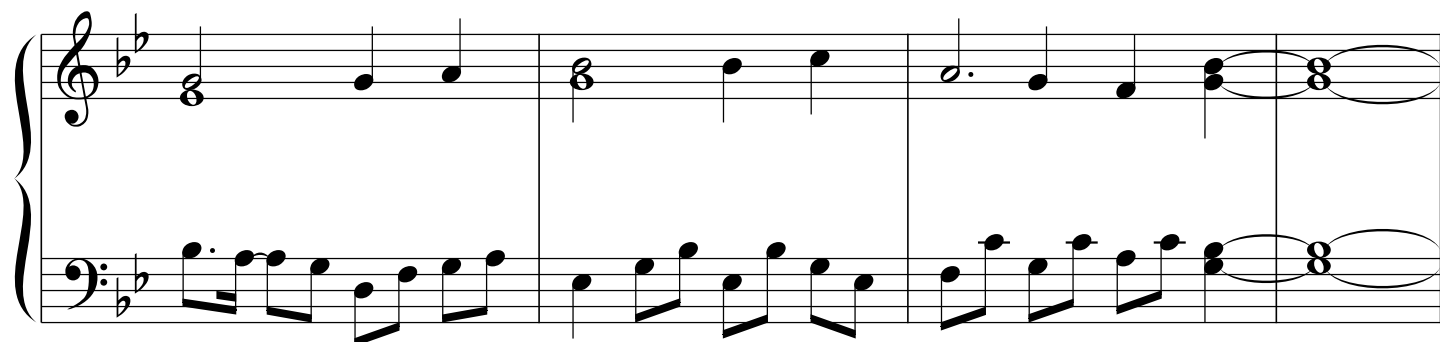
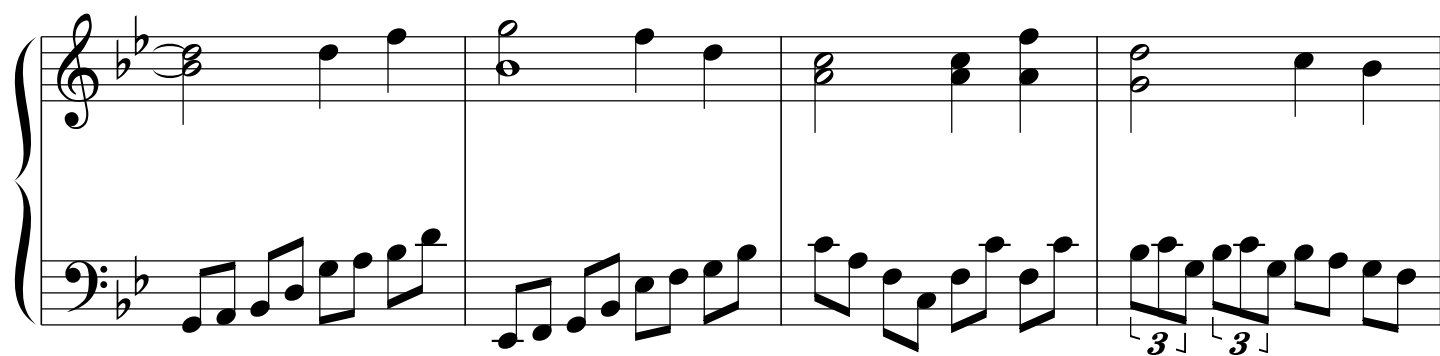
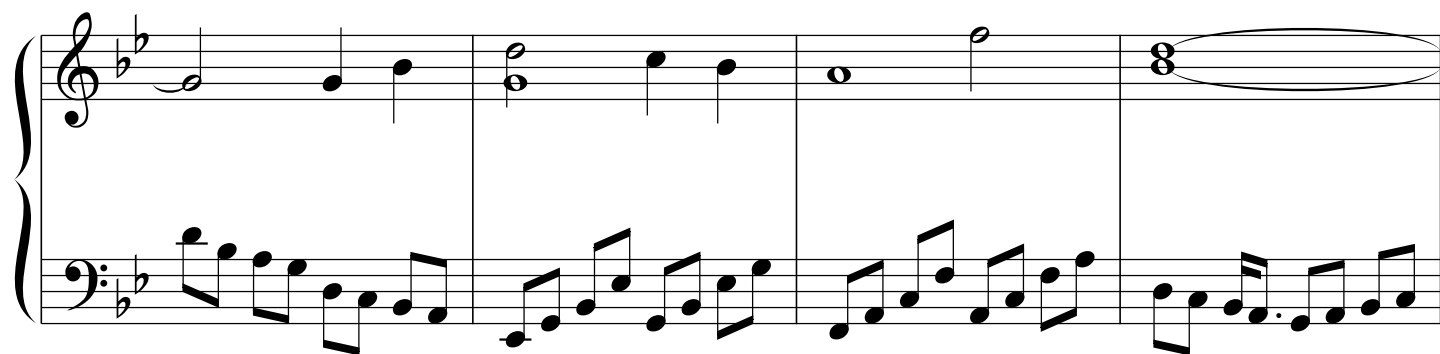


紅樓 ～ Eastern Dream... -Easy-

♩ = 120

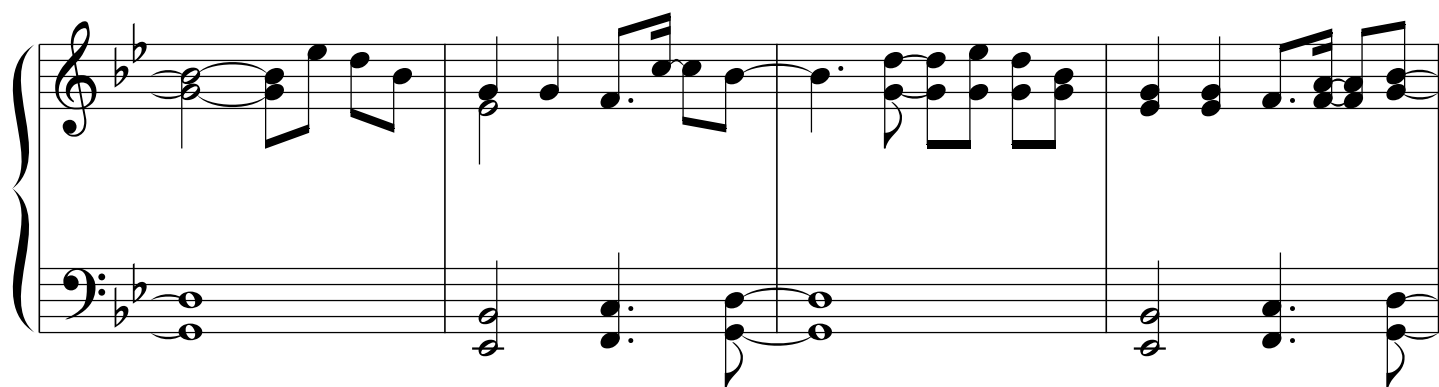
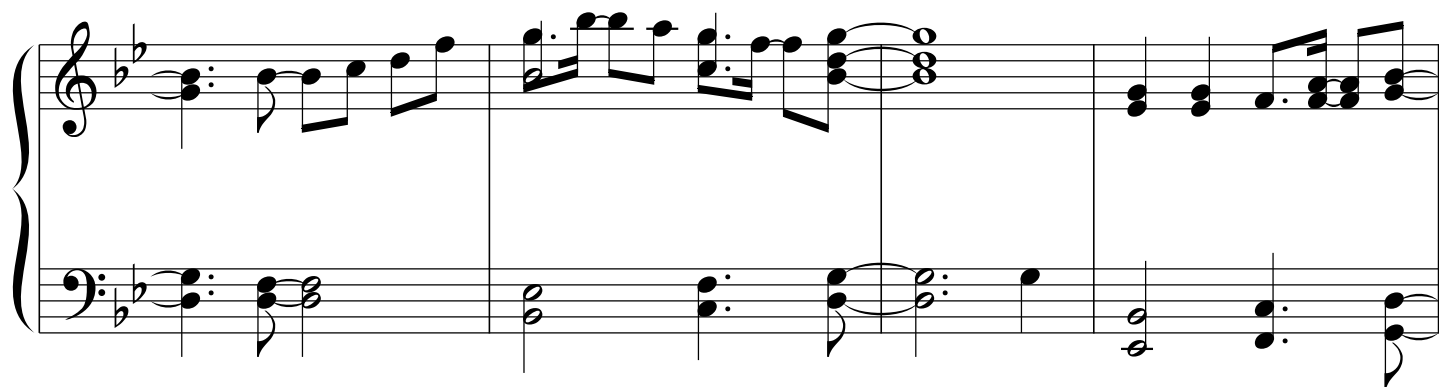
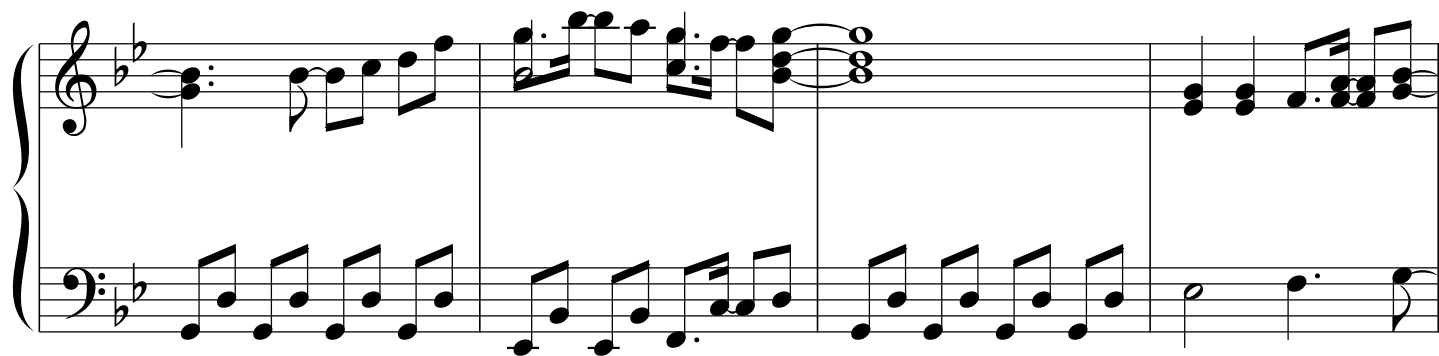


The first system of the piano score is in B-flat major (two flats) and 8/8 time. The left hand begins with a whole rest marked with an '8', followed by a steady eighth-note accompaniment. The right hand starts with a whole rest, then enters with a melodic line of eighth notes, concluding with a half-note chord.

The second system continues the musical texture. The right hand features a half-note chord followed by a melodic phrase of eighth notes. The left hand maintains its consistent eighth-note accompaniment throughout the system.

The third system introduces a more complex right-hand melody with sixteenth-note runs and a half-note chord. The left hand continues with the same eighth-note accompaniment pattern.

The fourth system returns to a similar texture to the second system, with a half-note chord and eighth-note melody in the right hand, and a steady eighth-note accompaniment in the left hand.



The first system of the piano score consists of two staves. The right hand (treble clef) begins with a whole note chord of B-flat and D-flat, followed by a descending eighth-note scale: G-flat, F, E-flat, D, C, B-flat. The next two measures feature a more complex melodic line with eighth and sixteenth notes, including a triplet of eighth notes. The left hand (bass clef) provides a harmonic accompaniment with a whole note chord of B-flat and D-flat in the first measure, followed by a descending eighth-note scale: G-flat, F, E-flat, D, C, B-flat. The system concludes with a whole note chord of B-flat and D-flat.

The second system continues the musical themes. The right hand features a series of eighth-note scales and chords, including a triplet of eighth notes. The left hand provides a harmonic accompaniment with a whole note chord of B-flat and D-flat in the first measure, followed by a descending eighth-note scale: G-flat, F, E-flat, D, C, B-flat. The system concludes with a whole note chord of B-flat and D-flat.

The third system concludes the piece. The right hand features a final melodic phrase with a whole note chord of B-flat and D-flat. The left hand provides a harmonic accompaniment with a whole note chord of B-flat and D-flat. The system concludes with a double bar line.